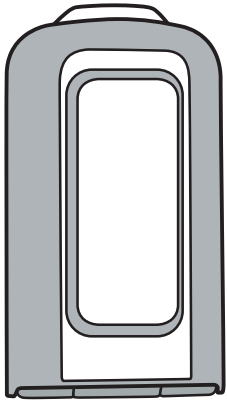


User Guide

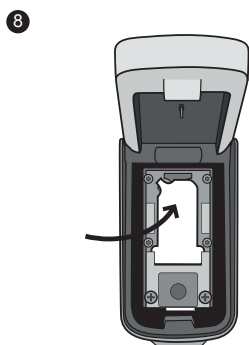
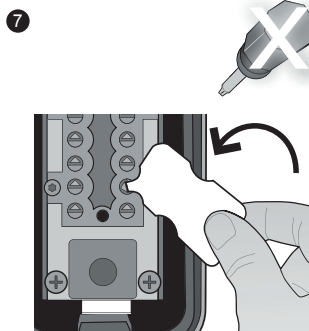
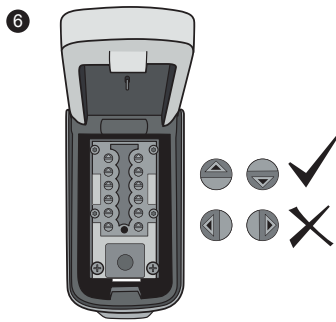
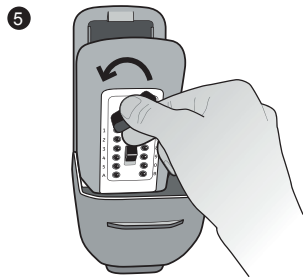
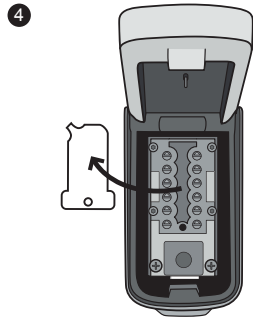
Pushbutton combination



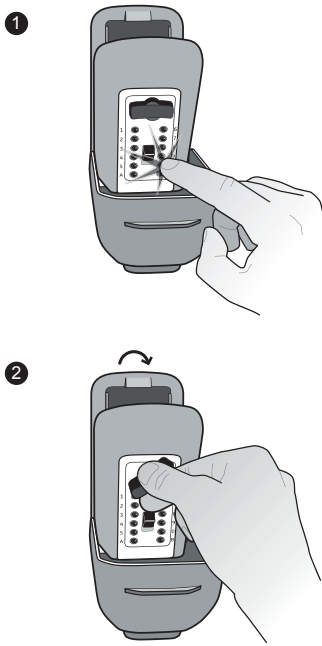
© February 2015



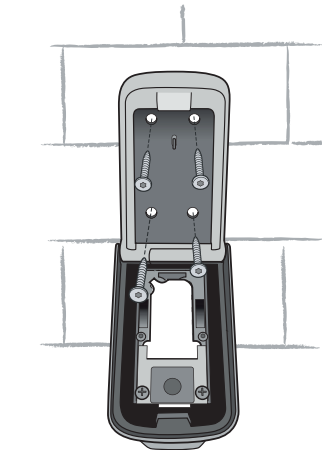
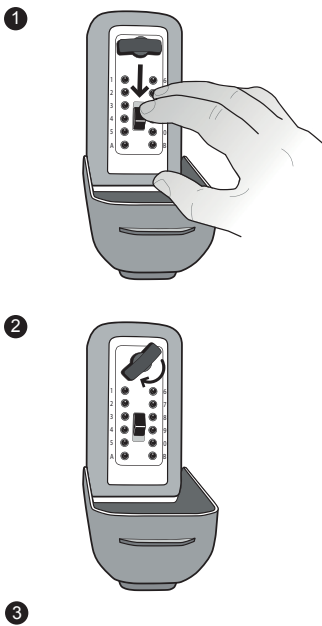
A



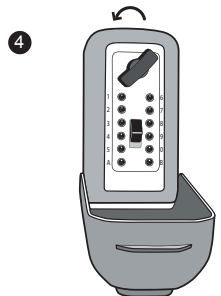
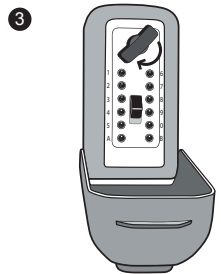
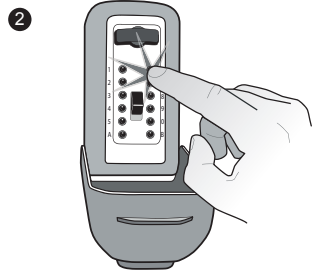
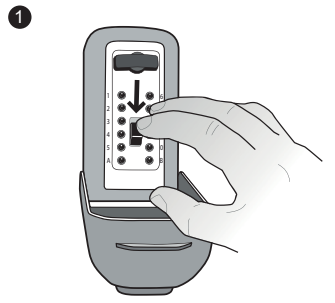
B



C



D



Please see pictures (overleaf) and information below for step-by-step instructions. There are also videos showing you how to set a code and how to install your KeySafeat www.keysafe.co.uk. If you have any questions or difficulty in setting your code or installing your KeySafe contact The Key Safe Company on 01905 770333.

Mounting Template

KeySafe™ Consumer 500 (C500)

A. Setting your combination

- There is no preset combination code in your C500 KeySafe
- You will need to select your own combination, ideally featuring between 5 and 7 digits and use a combination of both numbers and letters
- Each number/letter can only be used once
- Do not use a combination that can be easily guessed
- There is no override or reset code. Make a note of your code and store it somewhere safe

1. Hold the clear plastic tab and pull open the black weather cover. This plastic tab should be discarded once the C500 is mounted.
2. Press down on the CLEAR button (located in the centre of the C500) and then release.
3. Turn the OPEN dial clockwise 180° to open the lid. The word OPEN will now be upside-down.
4. Slide the white plastic instruction card on the lid towards the hinge of the KeySafe and remove. This will reveal a red warning sticker. Please read before removing.
5. Without closing the C500 lid, leaving the KeySafe open, turn the open dial on the front of the C500 counter clockwise 180°, back to the locked position. The word OPEN will now be the correct way up. Confirm that the "GREEN" triangle is visible on the locking bolt.
6. There are twelve grey buttons on the back of the lid. Each of these grey buttons corresponds to the black buttons on the front of the C500. These buttons each have small arrows in the shape of a triangle. Arrows pointing away from the hinge are OFF and are not part of the combination. Arrows pointing towards the hinge are ON and are part of the combination.

Important! The locking pin must be in LOCKED position before the code can be changed. Forcing the setting buttons when in the DOWN position may damage the C500 and void the warranty.

7. Use the white plastic card (code change tool) provided to set your combination. If you encounter resistance, stop and check to make sure the locking bolt is LOCKED and the word OPEN is the correct way up on the OPEN dial.

Note: Do not use a screwdriver!

To add a number or letter to the code, use the code change tool to push in the grooved button by the number/letter you wish to set. Turn 180° until the button pops back up completely and the arrow points in the ON direction (towards the hinge). To remove a number or letter from the code, use the code change tool to push in the grooved button by the number/letter you wish to unset. Turn 180° until the button pops back up completely and the arrow points in the OFF direction (away from the hinge).

8. Return the red sticker and the white plastic card over the back of the lid.

B. Testing your combination

1. With the C500 still open, making sure the word OPEN is the correct way up on the OPEN dial. If it is not, turn the OPEN dial counter-clockwise until it is the correct way up. On the front of the C500, pressing only the buttons in your combination, press each button in until it clicks. If you press the wrong button, push down on the clear button and enter your code again.
2. Turn the OPEN dial clockwise 180° to open. If the combination is set correctly, the OPEN handle will turn fully and the locking bolt will retract. If not, push down the CLEAR button and check to ensure you have entered the correct code. Refer to section A. Setting your combination if you continue to experience difficulty.

C. Mounting your C500 KeySafe

Decide where to install your C500 KeySafe. If possible we recommend out of line of easy sight for passers-by and in a position of good light to make it easier for the user.

- You must use the included size 6x60mm masonry screws provided and install the Keysafe into brick or concrete to maintain the LPS 1175 security certification and Police approval.
- When mounting on a rendered wall, the maximum thickness of the render cannot exceed 10mm.
- Do not mount C500 closer than 6" or 15cm to the corner of a masonry surface.
- Make sure C500 is mounted flush with the masonry surface and the masonry screws are only installed directly into brick. Never install masonry screws into mortar and minimize all gaps between back of C500 and the masonry surface.

1. Press down on the CLEAR button and enter the combination you set in Section B.
2. Turn the OPEN dial clockwise 180° to open the lid.
3. Use the mounting template to position the holes so they are as close to the center of the brick as possible. Do not install screws into mortar since this will weaken the mounting.
4. Use the mounting template to drill four mounting holes using a 5mm masonry drill bit to a depth of at least 7mm deeper than the length of the screw. To help guide your drill depth, use a piece of masking tape to mark the correct length on your drill bit.
5. Clean out any dust and debris from all holes.
6. Position the C500 over the four drilled holes and drive all four screws directly into the brick. There is no need to use rawl plugs as each screw cuts its own thread.
7. Tighten each screw a little at a time rather than one screw fully to ensure a secure fixing. Tighten until the screw heads are snug against the back of the C500. Be careful not to over tighten.

D. Opening and Closing your C500 KeySafe

1. Press down on the CLEAR button.
2. Enter the combination. If you enter an incorrect combination, press down on the CLEAR button and re-enter the combination.
3. Turn the OPEN dial clockwise 180° to open. When you turn the handle, the combination will clear.
4. To relock, close the lid and turn the OPEN dial counter-clockwise 180° back to the locked position.

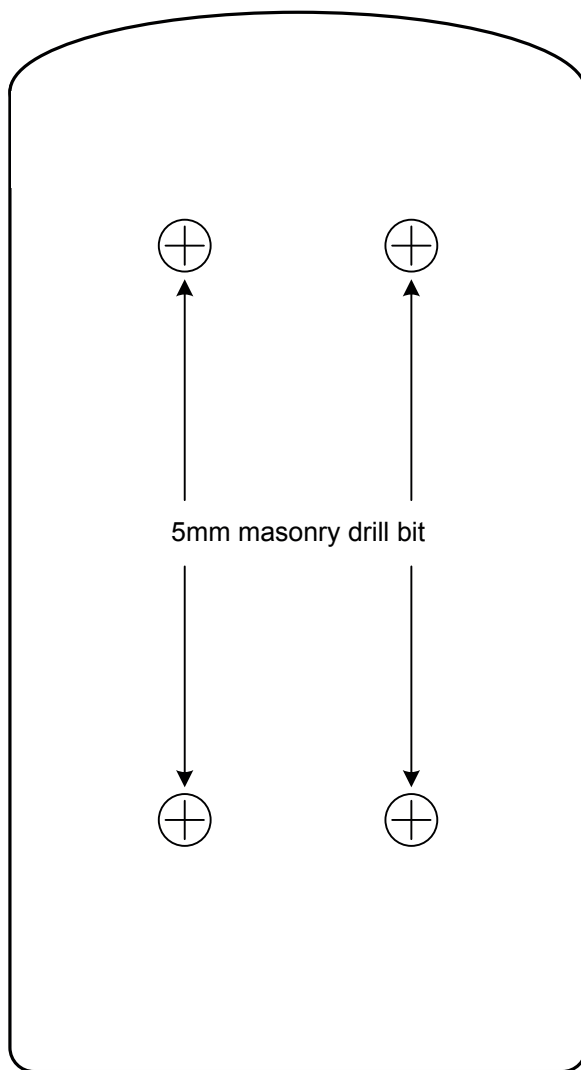
Parts Included

KeySafe Consumer 500, 002049 includes:	
Masonry mounting kit	10102698G1-01
Code change tool	

Accessories/Replacement Parts

Item	Part #
Weather cover	10102726P1
Code tamper plate	10102703G1
Masonry mounting kit	10102698G1-01
Key Cover	10102725P1

www.keysafe.co.uk
01905 770333



Tools Needed

- Drill
- 5mm masonry drill bit
- Torx T30 screwdriver

Limited Warranty

UTC Fire & Security ("UTCFS") warrants that this product will be free of defects in material and workmanship for one year (two years in Europe) from the date of purchase. This warranty is limited to repair or replacement at UTCFS' option. This warranty does not cover forgotten or incorrectly set combinations. Damage caused by modification, abuse or misuse, wear and tear, improper installation, application, storage, or fault or negligence of a party other than UTCFS are not covered. UTCFS will not be responsible for labor costs of removal or reinstallation of products. The repaired or replaced product is then warranted under the terms of this limited warranty for the balance of the term of the warranty or for 90 days, whichever is longer. UTCFS MAKES NO OTHER WARRANTY, EXPRESS OR IMPLIED, OF MERCHANTABILITY OR FITNESS FOR A PARTICULAR PURPOSE. IN NO EVENT SHALL UTCFS BE LIABLE FOR LOSS OF USE, LOST PROFITS, THEFT, PROPERTY DAMAGE, SPECIAL, INCIDENTAL OR CONSEQUENTIAL DAMAGES. To obtain repair or replacement information under the terms of this warranty, please contact your local supplier.



Trust. Quality. Passion.